



# **SOUTH AUSTRALIAN ECONOMIC INDICATORS**

EMBARGO: 11:30AM (CANBERRA TIME) MON 3 MAR 2003

## **C O N T E N T S**

	<i>page</i>
Notes.....	2
REVIEW	
Overview .....	3
Selected features .....	4
TABLES	
List of tables .....	5
Statistical summary .....	6
State summary .....	8
State accounts .....	9
International trade .....	10
Consumption and investment .....	13
Production .....	15
Consumer price index .....	19
Labour force and demography .....	20
Average weekly earnings .....	23
Financial markets .....	24
ADDITIONAL INFORMATION	
Publications source index .....	25

- For further information about these and related statistics, contact Ann Halford on Adelaide 08 8237 7408, or the National Information and Referral Service on 1300 135 070.

## NOTES

### FORTHCOMING ISSUES

<i>ISSUE</i>	<i>RELEASE DATE</i>
April 2003	1 April 2003
May 2003	1 May 2003
June 2003	2 June 2003
July 2003	1 July 2003
August 2003	1 August 2003
September 2003	1 September 2003

### ABOUT THIS PUBLICATION

*South Australian Economic Indicators* is a monthly publication which contains the latest available data at the time of preparation for a range of statistical series that have been identified as indicators of economic activity in this State. In a number of cases the figures presented are preliminary and subject to revision in subsequent issues.

### SYMBOLS AND OTHER USAGES

n.a.	not available
n.y.a.	not yet available
*	subject to sampling variability too high for most practical purposes
..	not applicable
0, 0.0	nil, or rounded to zero

### ROUNDING

Where figures have been rounded, discrepancies may occur between sums of the component items and totals.

### INFORMATION

All data are presented in original terms, unless otherwise stated. More detailed information on each series, including explanatory and technical notes, can be obtained from other Australian Bureau of Statistics publications or alternative data sources. To assist those seeking further information, the series presented in the statistical and state summaries provides a reference to the Publication Source Index which is at the end of this publication.

Ian Crettenden  
Regional Director  
South Australia

## OVERVIEW

The data in this Overview are presented in trend terms, unless otherwise stated.

### INTERNATIONAL TRADE

The value of South Australian merchandise exports in original terms for the month of December 2002 was \$830.9m. This was an increase of 1.9% from the value for November 2002 and an increase of 1.3% on December 2001.

The value of South Australian merchandise imports in original terms for the month of December 2002 was \$552.1m. This was a increase of 5.0% from the value for November 2002 and an increase of 45.3% from December 2001.

### CONSUMPTION AND INVESTMENT

South Australia's retail turnover increased by 6.3% over the 12 months to December 2002. Retail turnover for December 2002 was \$1,081.6m.

There were 4,674 new motor vehicle sales in January 2003, an increase of 10.1% from January last year.

Private new capital expenditure in the September Quarter 2002 was \$896m, an increase of 33.3% on the September Quarter 2001.

### HOUSING

The number of dwelling units approved in December 2002 was 1005, a rise of 4.8% from December 2001.

### CONSUMER PRICE INDEX

The Consumer Price Index (All Groups) for Adelaide increased by 0.9% to 141.5 in the December Quarter 2002, and by 3.6% over the level recorded twelve months previously.

### LABOUR FORCE AND DEMOGRAPHY

The trend estimate of employed persons in South Australia rose to 703,400 in January 2003 and was 17,800 persons higher than the level of twelve months ago (685,600). The total number of persons employed full-time in South Australia was 493,300 in January 2003 which was higher than the January 2002 estimate of 472,700.

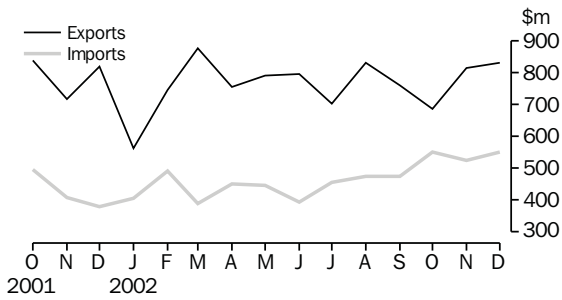
In January 2003, the trend estimate of the unemployment rate for South Australia was 5.9% and was lower than the rate in January 2002 (7.0%). The trend estimate of the participation rate in South Australia was 61.0% in January 2003 compared with 60.6% in January 2002.

### FINANCIAL MARKETS

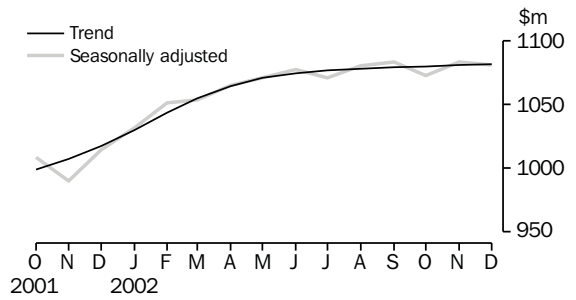
The value of secured housing finance commitments (excluding alterations and additions) was \$498m in December 2002. This was a 0.6% decrease from November 2002 and a 3.8% increase on December 2001.

## SELECTED FEATURES

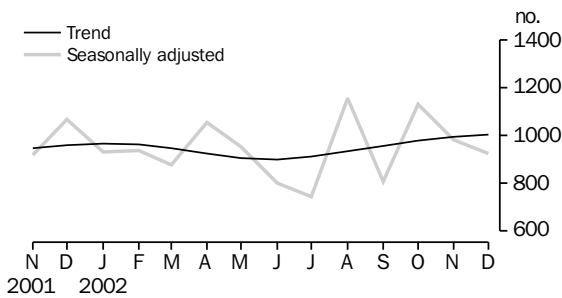
MERCHANDISE EXPORTS AND IMPORTS



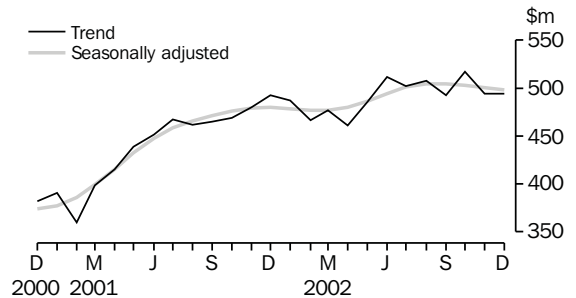
RETAIL TURNOVER



DWELLING UNITS APPROVED

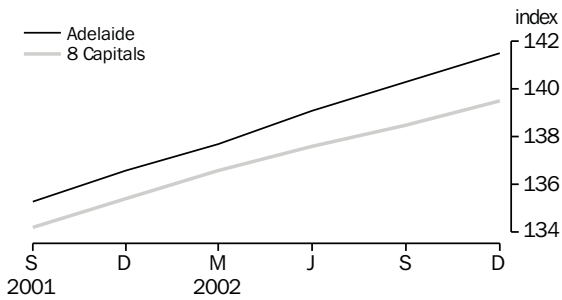


SECURED HOUSING FINANCE COMMITMENTS(a)

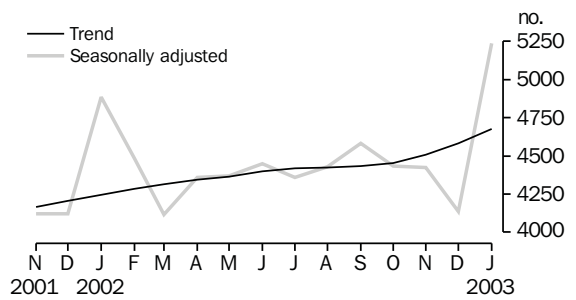


(a) Excludes alterations and additions. Includes refinancing.

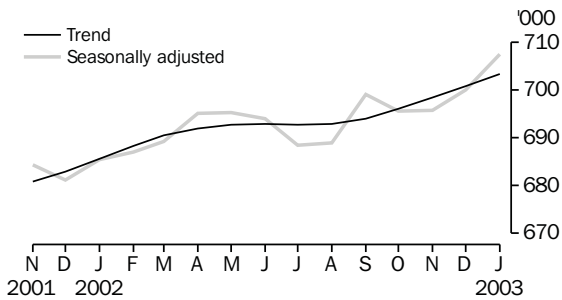
CONSUMER PRICE INDEX



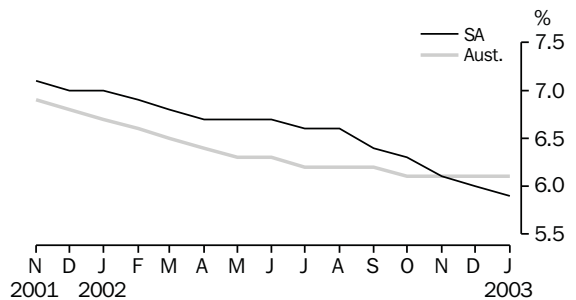
NEW MOTOR VEHICLE SALES



EMPLOYED PERSONS



UNEMPLOYMENT RATES—TREND



## LIST OF TABLES

			Page
STATISTICAL SUMMARY	<b>1</b>	Statistical summary	6
	<b>2</b>	State summary	8
STATE ACCOUNTS	<b>3</b>	State accounts at current prices	9
	<b>4</b>	State accounts at chain volume measures	9
INTERNATIONAL TRADE	<b>5</b>	Merchandise exports, by selected commodity group	10
	<b>6</b>	Merchandise exports, by selected countries and country groups	11
	<b>7</b>	Merchandise imports, by selected commodity group	12
CONSUMPTION AND INVESTMENT	<b>8</b>	Turnover of retail establishments, by industry—trend	13
	<b>9</b>	New motor vehicle sales, by type of vehicle	13
	<b>10</b>	Actual private new capital expenditure, by selected industry and type of asset	14
	<b>11</b>	Tourist accommodation	14
PRODUCTION	<b>12</b>	Building approvals	15
	<b>13</b>	Building commencements	16
	<b>14</b>	Value of building work done and completed during period	17
	<b>15</b>	Production, livestock products and selected commodities	18
	<b>16</b>	Consumer price index, by group—Adelaide	19
LABOUR FORCE AND DEMOGRAPHY	<b>17</b>	Estimated resident population and components of population change	20
	<b>18</b>	Births, deaths, marriages and divorces	20
	<b>19</b>	Civilian labour force status	21
	<b>20</b>	Civilian labour force, unemployment and participation rates	22
AVERAGE WEEKLY EARNINGS	<b>21</b>	Average weekly earnings of employees	23
FINANCIAL MARKETS	<b>22</b>	Secured housing finance commitments	24
	<b>23</b>	Finance commitments	24

Indicator	Period	South Australia			Australia			SA as a % of Aust.	Source index
		Number	% change from		Number	% change from			
			Previous period	Same period previous year		Previous period	Same period previous year		
<b>State accounts</b>									
Domestic final demand									
Current prices trend (\$m)	Sept qtr 02	13 439	2.2	10.3	187 359	1.8	8.1	7.2	(1)
Chain volume measures trend (\$m)	Sept qtr 02	12 927	1.3	7.8	181 312	1.2	6.1	7.1	(1)
Private final consumption expenditure									
Current prices trend (\$m)	Sept qtr 02	8 172	2.2	8.7	111 301	1.6	6.6	7.3	(1)
Chain volume measures trend (\$m)	Sept qtr 02	7 872	1.4	6.2	107 339	1.0	4.4	7.3	(1)
Private gross fixed capital formation									
Current prices trend (\$m)	Sept qtr 02	2 343	3.4	23.2	35 962	3.3	16.0	6.5	(1)
Chain volume measures trend (\$m)	Sept qtr 02	2 293	3.1	21.8	35 378	3.1	15.6	6.5	(1)
Compensation of employees									
Current prices trend (\$m)	Sept qtr 02	5 599	0.8	5.1	87 109	1.8	5.5	6.4	(1)
<b>International accounts</b>									
Exports (\$m)	Dec 02	830.9	1.9	1.3	10 052.4	-3.3	-0.7	8.3	(2)
Imports (\$m)	Dec 02	552.1	5.0	45.3	12 113.8	4.1	32.6	4.6	(2)
<b>Consumption and investment</b>									
Retail turnover									
Current prices original (\$m)	Dec 02	1 385.9	20.3	6.9	18 541.6	21.8	5.7	7.5	(3)
Current prices trend (\$m)	Dec 02	1 081.6	0.1	6.3	14 523.5	0.3	6.5	7.4	(3)
Chain volume measures original (\$m)	Dec qtr 02	3 485.1	15.5	6.1	46 632.6	15.9	5.4	7.5	(3)
New motor vehicle sales									
Original (no.)	Jan 03	3 988.0	-12.0	7.0	61 170.0	-10.0	4.5	6.5	(4)
Trend (no.)	Jan 03	4 674.0	2.0	10.1	70 582.0	0.7	3.2	6.6	(4)
Private new capital expenditure									
Current prices original (\$m)	Sept qtr 02	799.0	-10.8	30.8	11 508.0	-4.7	11.3	6.9	(5)
Current prices trend (\$m)	Sept qtr 02	896.0	4.3	33.3	11 672.0	1.7	9.4	7.7	(5)
Private new capital expenditure (\$m)	2001-02	3 113.0	8.8	..	44 326.0	4.1	..	7.0	(5)
Tourist accomodation takings (\$m)	Sept qtr 02	54.9	3.6	8.7	1 238.3	12.6	1.0	4.4	(6)
<b>Production</b>									
Dwelling unit approvals									
Original (no.)	Dec 02	891.0	-4.5	-8.1	12 901.0	-6.5	0.6	6.9	(7)
Trend (no.)	Dec 02	1 005.0	1.0	4.8	14 348.0	-2.9	1.6	7.0	(7)
Dwelling units commenced (no.)	Sept qtr 02	2 749.0	4.0	14.5	48 648.0	11.4	20.1	5.7	(8)
Value of non-residential building approvals—trend (\$m)									
	Dec 02	99.4	4.4	33.4	1 582.7	3.6	31.1	6.3	(7)
Value of total building activity									
Commenced (\$m)	Sept qtr 02	649.1	13.2	16.3	12 556.8	10.2	25.2	5.2	(8)
Work done (\$m)	Sept qtr 02	613.3	9.8	36.1	12 026.7	10.3	29.3	5.1	(8)
Work yet to be done (\$m)	Sept qtr 02	842.7	7.4	20.0	18 253.0	6.9	35.7	4.6	(8)
Value of engineering construction work done (\$m)									
	Sept qtr 02	319.9	-17.0	4.4	5 505.1	-2.9	23.4	5.8	(9)
Manufacturing production									
Red meat trend (tonnes)	Dec qtr 02	62 863.0	0.8	13.1	809 541.0	1.4	6.9	7.8	(11)
Mineral exploration expenditure (other than for petroleum)(a) (\$m)									
	Sept qtr 02	9.7	-2.0	40.6	183.1	8.8	9.4	5.3	(12)

(a) From July 2000 value data no longer contains Wholesale Sales Tax.

Indicator	Period	South Australia			Australia			SA as a % of Aust.	Source index
		Number	% change from		Number	% change from			
			Previous period	Same period previous year		Previous period	Same period previous year		
<b>Prices(a)</b>									
CPI—All groups (index no.)	Dec qtr 02	141.5	0.9	3.6	139.5	0.7	3.0	..	(13)
Price index of materials used in house building (index no.)	Dec qtr 02	135.2	0.5	3.9	130.1	1.0	3.9	..	(14)
Price index of materials used in building other than houses (index no.)	Dec qtr 02	123.3	1.2	4.2	122.8	1.0	4.0	..	(14)
Price index of established houses (index no.)	Sep qtr 02	168.7	5.6	19.9	196.7	3.8	17.3	..	(15)
Price index of project homes (index no.)	Sep qtr 02	153.6	1.6	6.0	141.3	1.0	3.6	..	(15)
<b>Labour force and demography</b>									
Population (resident at end qtr) ('000)	Jun qtr 02	1 522.2	0.1	0.5	19 707.2	0.3	1.1	7.7	(16)
Labour force									
Original ('000)	Jan 03	748.8	-0.5	2.0	10 092.4	-1.2	2.4	7.4	(17)
Trend ('000)	Jan 03	747.4	0.3	1.4	10 137.8	0.4	2.3	7.4	(17)
Employed persons									
Original ('000)	Jan 03	699.5	-1.6	3.2	9 439.7	-1.6	3.5	7.4	(17)
Trend ('000)	Jan 03	703.4	0.4	2.6	9 517.4	0.4	2.9	7.4	(17)
Participation rate									
Original(b) (%)	Jan 03	61.0	-0.4	0.6	64.0	-0.9	0.6	..	(17)
Trend(b) (%)	Jan 03	61.0	0.2	0.4	64.3	0.2	0.5	..	(17)
Unemployment rate									
Original(b) (%)	Jan 03	6.6	1.0	-1.1	6.5	0.4	-0.9	..	(17)
Trend(b) (%)	Jan 03	5.9	-0.1	-1.1	6.1	0.0	-0.6	..	(17)
Job vacancies ('000)	Nov qtr 02	5.2	-33.3	-21.2	96.1	-12.3	10.0	5.4	(18)
Industrial disputes ('000 working days lost)	Nov 02	0.6	-40.0	-33.3	25.3	9.5	-32.0	2.4	(19)
<b>Income</b>									
Average weekly earnings (full-time adults; ordinary time)									
Original (\$)	Nov qtr 02	818.9	1.7	2.9	889.6	1.2	4.8	..	(20)
Trend (\$)	Nov qtr 02	813.9	0.8	2.2	888.5	1.1	4.7	..	(20)
Wage cost index (total hourly rate excluding bonuses)(c) (index no.)	Dec qtr 02	118.5	1.4	4.0	118.3	0.8	3.4	..	(21)
<b>Financial markets</b>									
Secured housing finance(d)									
Original (\$m)	Dec 02	536.8	1.5	5.7	8 488.2	-2.1	11.5	6.3	(22)
Trend (\$m)	Dec 02	498.0	-0.6	3.8	8 533.6	0.1	5.7	5.8	(22)
Finance commitments									
Personal (\$m)	Dec 02	414.9	6.6	32.5	5 709.8	-0.7	29.4	7.3	(23)
Commercial (\$m)	Dec 02	1079.9	25.5	19.7	24 051.2	19.9	34.0	4.5	(23)
Lease (\$m)	Dec 02	14.2	10.7	-12.0	553.0	17.6	-0.1	2.6	(23)
Interest rates(b)									
Banks new housing loans (%)	Dec 02	..	..	..	6.6	0.0	0.5	..	(24)
Bank loans—small, medium business(e) (%)	Dec 02	..	..	..	8.0	0.0	0.5	..	(24)
Bank loans—large business (%)	Dec 02	..	..	..	8.4	0.0	0.4	..	(24)

(a) Base year of each index 1989-90 = 100.

(b) Change is shown in terms of percentage points.

(c) Base year of index Sep 1997 = 100.

(d) Excludes alterations and additions. Includes refinancing.

(e) Rate for business loans over \$50,000.

## 2

## STATE SUMMARY

<i>Indicator</i>	<i>Period</i>	<i>NSW</i>	<i>Vic.</i>	<i>Qld</i>	<b>SA</b>	<i>WA</i>	<i>Tas.</i>	<i>NT</i>	<i>ACT</i>	<i>Source index</i>
SELECTED INDICATORS										
CPI — All groups(a) (index no.)	Dec qtr 02	140.4	139.0	139.9	<b>141.5</b>	136.4	138.0	136.2	139.2	(13)
Participation rate trend (%)	Jan 03	63.3	64.4	65.4	<b>61.0</b>	67.1	58.8	73.2	73.2	(17)
Unemployment rate trend (%)	Jan 03	5.9	5.7	6.9	<b>5.9</b>	6.1	8.6	5.9	3.9	(17)
Average weekly earnings (full-time adults; ordinary time) trend (\$)	Nov 02	933.60	894.50	821.50	<b>813.90</b>	887.30	820.90	862.40	1 017.00	(20)
SELECTED INDICATORS PER HEAD OF POPULATION(b)										
State final demand										
Chain volume measures trend (\$'000)	Sept qtr 02	9.3	9.3	8.7	<b>8.5</b>	9.0	7.7	13.0	15.9	(1)
Retail turnover										
Current prices original (\$)	Dec 02	970.7	908.3	938.6	<b>910.4</b>	952.1	819.0	813.1	1 184.0	(3)
Current prices, trend	Dec 02	763.0	693.6	754.1	<b>710.5</b>	738.9	630.2	734.3	941.5	(3)
New motor vehicle Sales trend (no. per '000 population)	Jan 03	3.6	4.0	3.5	<b>3.1</b>	3.3	2.6	3.2	3.7	(4)
Private new capital expenditure										
Current prices trend (\$)	Sept qtr 02	497.3	620.7	559.2	<b>588.6</b>	785.3	508.8	2 118.9	454.3	(5)
Dwelling unit approvals										
Original (no. per '000 population)	Dec 02	0.529	0.721	0.764	<b>0.585</b>	0.795	0.422	0.400	0.977	(7)
Trend (no. per '000 population)	Dec 02	0.648	0.733	0.866	<b>0.660</b>	0.845	0.317	0.450	1.146	(7)
Secured housing finance(c) (\$)	Dec 02	492.5	428.1	389.6	<b>352.6</b>	433.7	232.9	241.9	428.3	(22)
PERCENTAGE CHANGE FROM PREVIOUS PERIOD										
State final demand										
Chain volume measures trend (%)	Sept qtr 02	0.8	1.2	2.1	<b>1.3</b>	1.0	0.8	0.8	0.4	(1)
Retail turnover										
Current prices original (%)	Dec 02	22.1	23.8	20.2	<b>20.3</b>	22.3	23.9	8.0	18.7	(3)
Current prices, trend	Dec 02	0.4	-0.1	0.5	<b>0.1</b>	0.9	0.5	-0.5	0.2	(3)
New motor vehicle sales trend (%)	Jan 03	0.8	0.9	-0.5	<b>2.0</b>	1.4	0.6	2.2	1.8	(4)
Private new capital expenditure										
Current prices trend (%)	Sept qtr 02	-0.7	1.4	4.2	<b>4.3</b>	1.7	-5.5	3.7	-3.9	(5)
Dwelling unit approvals										
Original (%)	Dec 02	-21.0	7.7	0.2	<b>-4.5</b>	-14.7	37.0	33.3	8.2	(7)
Trend (%)	Dec 02	-1.6	-5.4	-2.7	<b>1.0</b>	-2.8	-4.5	-6.3	-1.6	(7)
CPI—All groups (%)	Dec qtr 02	0.6	0.9	0.5	<b>0.9</b>	0.4	0.4	0.6	0.8	(13)
Participation rate trend(d) (%)	Jan 03	0.3	0.2	0.2	<b>0.2</b>	0.2	0.2	0.2	0.0	(17)
Unemployment rate trend(d) (%)	Jan 03	0.0	0.0	0.0	<b>-0.1</b>	0.0	0.0	0.3	0.0	(17)
Average weekly earnings (full-time adults; ordinary time) trend (%)	Nov 02	1.4	0.9	1.0	<b>0.8</b>	1.0	1.4	0.9	2.9	(20)
Secured housing finance (%)	Dec 02	-4.3	3.4	-5.1	<b>1.4</b>	-2.6	5.1	15.8	-14.6	(22)

(a) Base year of index 1989-90 = 100.

(b) The latest quarterly estimate of Australian resident population has been used to calculate ratios for subsequent periods.

(c) Excludes alterations and additions. Includes refinancing.

(d) Change is shown in terms of percentage points.



### 3

#### STATE ACCOUNTS AT CURRENT PRICES

Period	<i>Final consumption expenditure</i>		<i>Gross fixed capital formation</i>			State final demand	Gross State product	Compensation of employees
	Households	General government	Private	Public				
ANNUAL (\$m)								
<b>1999-00</b>	26 618	8 789	(a)10 163	(a)-1 445	44 125	41 192	19 965	
<b>2000-01</b>	28 880	9 143	8 522	112	46 658	44 119	20 938	
<b>2001-02</b>	31 067	9 542	8 281	1 476	50 366	47 002	21 901	
QUARTERLY, TREND (\$m)								
<b>2000-01</b>								
June	7 399	2 349	1 858	338	11 943	n.a.	5 236	
<b>2001-02</b>								
September	7 516	2 387	1 902	380	12 185	n.a.	5 325	
December	7 655	2 420	1 999	401	12 474	n.a.	5 423	
March	7 821	2 464	2 140	389	12 809	n.a.	5 496	
June	7 998	2 517	2 267	366	13 145	n.a.	5 555	
<b>2002-03</b>								
September	8 172	2 546	2 343	355	13 439	n.a.	5 599	

(a) The negative figure for Public gross fixed capital formation and the larger than usual positive figure for Private gross fixed capital formation are the result of the sale of the South Australian electrical transmission network in December quarter 1999. For more information see *National Income, Expenditure and Product, Australian National Accounts, June 2000* (cat. no. 5206.0).

Source: *Australian National Accounts: Quarterly State Details* (cat. no. 5206.0), and *Australian National Accounts: State Accounts* (cat. no. 5220.0).

### 4

#### STATE ACCOUNTS AT CHAIN VOLUME MEASURES(a)

Period	<i>Final consumption expenditure</i>		<i>Gross fixed capital formation</i>			State final demand	Gross State product
	Households	General government	Private	Public			
ANNUAL (\$m)							
<b>1999-00</b>	27 835	9 000	(b)10 516	(b)-2 384	45 859	42 727	
<b>2000-01</b>	28 880	9 143	8 522	-732	46 658	44 119	
<b>2001-02</b>	30 470	9 352	8 180	521	49 463	45 765	
QUARTERLY, TREND (\$m)							
<b>2000-01</b>							
June	7 331	2 304	1 838	335	11 822	n.a.	
<b>2001-02</b>							
September	7 413	2 318	1 883	377	11 994	n.a.	
December	7 521	2 341	1 977	396	12 235	n.a.	
March	7 644	2 375	2 111	384	12 515	n.a.	
June	7 765	2 411	2 225	363	12 764	n.a.	
<b>2002-03</b>							
September	7 872	2 431	2 293	353	12 927	n.a.	

(a) Reference year for chain volume measures is 2000-2001.

(b) The negative figure for Public gross fixed capital formation and the larger than usual positive figure for Private gross fixed capital formation are the result of the sale of the South Australian electrical transmission network in December quarter 1999. For more information see *National Income, Expenditure and Product, Australian National Accounts, June 2000* (cat. no. 5206.0).

Source: *Australian National Accounts: National Income, Expenditure and Product* (cat. no. 5206.0), and *Australian National Accounts: State Accounts* (cat. no. 5220.0).

## 5

## MERCHANDISE EXPORTS, BY SELECTED COMMODITY GROUP(a)

<i>Period</i>	<i>Meat and meat preparations</i>	<i>Wheat</i>	<i>Wine</i>	<i>Wool and sheepskins (excl. wool tops)</i>	<i>Machinery</i>	<i>Metals and metal manufactures</i>	<i>Fish and crustaceans</i>	<i>Road vehicles, parts and accessories</i>	<i>Petroleum and petroleum products</i>	<i>Total(b)</i>
	\$'000	\$'000	\$'000	\$'000	\$'000	\$'000	\$'000	\$'000	\$'000	\$'000
<b>1999-00</b>	160 483	473 086	899 348	179 716	353 205	805 744	394 375	883 792	218 466	6 188 231
<b>2000-01</b>	262 565	767 524	1 081 599	236 034	381 785	1 019 926	451 841	1 399 489	355 781	8 286 782
<b>2001-02</b>	316 263	1 154 933	1 358 316	256 722	321 445	913 417	474 854	1 613 919	250 728	9 103 263
<b>2001-02</b>										
July	18 743	84 671	90 064	15 060	31 470	80 081	105 885	85 602	4 227	694 672
August	16 578	104 764	111 866	12 339	23 309	65 167	109 720	87 611	28 997	757 774
September	26 569	50 769	145 952	14 797	23 338	83 420	18 330	157 731	26 830	747 539
October	29 804	74 206	134 368	23 871	24 161	80 651	16 992	217 406	17 879	839 374
November	30 056	95 995	81 272	24 908	21 862	89 069	23 757	135 759	30 543	716 786
December	32 136	93 070	105 237	17 789	23 070	62 905	31 363	207 778	20 094	820 447
January	22 604	136 558	61 255	15 357	19 868	63 089	35 902	25 652	16 755	561 836
February	31 183	86 109	83 914	23 524	25 522	82 009	26 187	122 727	2 328	745 077
March	34 065	119 775	127 140	32 960	35 610	88 158	22 365	170 972	44 358	876 068
April	24 011	102 777	122 653	22 942	32 351	74 900	25 363	134 415	8 900	756 976
May	26 189	114 535	146 020	34 208	33 412	85 067	22 517	84 964	32 896	790 765
June	24 324	91 704	148 574	18 967	27 472	58 902	36 472	183 302	16 920	795 950
<b>2002-03</b>										
July	17 509	25 309	115 183	20 534	27 475	67 414	90 175	110 752	27 041	704 350
August	16 462	87 890	121 771	14 495	24 897	64 984	138 036	134 638	25 870	831 163
September	27 731	60 374	168 465	20 770	31 641	71 819	38 038	82 804	23 846	759 746
October	29 912	50 488	141 669	29 132	24 081	81 364	19 854	115 691	25 432	687 247
November	35 129	65 111	96 726	30 815	26 229	74 645	24 673	276 999	19 613	815 812
December	31 852	54 121	127 522	30 206	27 704	90 638	26 163	207 303	27 153	830 921

(a) Restrictions are placed on the release of statistics for certain commodities for reasons of confidentiality. These restrictions do not affect total export and import figures, but they can affect some items within commodity, industry and country tables. See *International Trade* (cat. no. 5422.0), Explanatory Notes, paragraph 30, for more details.

(b) Includes other commodity groups not listed.

Source: ABS data available on request.

## 6

## MERCHANDISE EXPORTS, BY SELECTED COUNTRIES AND COUNTRY GROUPS(a)

Period	European Union					South-East and North-East Asia				
	United States of America	Middle East	United Kingdom	Total European Union	New Zealand	Japan	China	Hong Kong	ASEAN(b)	Total
	\$'000	\$'000	\$'000	\$'000	\$'000	\$'000	\$'000	\$'000	\$'000	\$'000
<b>1999-00</b>	954 681	724 871	625 154	1 073 928	446 026	787 295	315 199	255 679	492 304	2 297 913
<b>2000-01</b>	1 354 759	1 335 811	713 525	1 232 563	480 887	963 481	437 939	298 939	683 694	2 882 839
<b>2001-02</b>	1 597 719	1 825 194	784 284	1 337 855	568 712	937 578	406 163	240 066	597 414	2 594 269
<b>2001-02</b>										
July	115 848	121 291	53 283	86 715	48 927	141 618	18 061	12 359	54 626	250 375
August	131 917	134 855	67 349	98 428	52 532	146 655	19 060	16 613	44 737	258 525
September	149 121	114 225	93 941	150 232	53 822	74 345	49 322	9 474	51 369	211 033
October	137 817	183 472	92 365	159 319	52 409	45 629	39 129	21 422	47 863	213 989
November	142 528	120 739	46 215	92 135	50 254	85 470	44 104	25 897	48 064	242 844
December	187 722	172 462	54 885	108 541	52 684	71 934	35 887	24 400	41 258	200 880
January	44 318	156 335	34 647	75 972	21 104	39 434	17 643	31 673	54 174	169 495
February	96 390	159 853	48 505	93 817	39 929	61 201	20 759	25 147	54 562	191 254
March	151 253	187 747	70 929	134 750	54 261	59 059	63 357	27 514	53 655	245 651
April	131 376	191 395	64 676	96 837	61 889	74 655	33 973	12 231	41 571	196 230
May	129 531	133 050	79 270	116 645	36 358	53 042	37 268	19 133	51 573	205 755
June	179 897	149 770	78 219	124 464	44 543	84 535	27 599	14 205	53 962	208 237
<b>2002-03</b>										
July	74 918	102 132	69 831	116 422	55 011	129 520	24 783	7 936	52 580	270 937
August	149 657	99 934	69 969	115 135	64 596	189 807	29 888	15 393	47 633	311 543
September	95 913	126 778	107 251	170 585	46 330	91 725	35 019	7 956	53 848	233 278
October	124 393	107 491	77 662	115 309	51 463	64 473	34 478	13 004	63 191	216 775
November	240 468	173 343	37 938	74 612	54 868	35 235	53 069	30 279	52 287	210 747
December	164 156	104 631	71 509	120 985	80 629	50 450	39 890	22 361	87 378	257 276

(a) See *International Merchandise Trade, Australia* (cat. no. 5422.0) for country group definitions.

(b) Figures from September 2001 have been updated to include Cambodia in the ASEAN country grouping.

Source: ABS data available on request.

## 7

## MERCHANDISE IMPORTS, BY SELECTED COMMODITY GROUP(a)

<i>Period</i>	<i>Food, beverages and tobacco</i>	<i>Petroleum and petroleum products</i>	<i>Chemicals</i>	<i>Textiles</i>	<i>Metals and metal manufactures</i>	<i>Machinery</i>	<i>Road vehicle parts and accessories</i>	<i>Other manufactured goods</i>	<i>Total(b)</i>
	\$'000	\$'000	\$'000	\$'000	\$'000	\$'000	\$'000	\$'000	\$'000
<b>1999-00</b>	163 509	515 641	263 959	97 100	262 737	1 164 672	834 842	845 913	4 319 348
<b>2000-01</b>	183 196	968 428	284 227	97 281	315 327	1 205 016	854 759	926 817	5 044 553
<b>2001-02</b>	205 295	869 161	266 527	106 543	332 538	1 399 576	887 698	1 058 212	5 346 782
<b>2001-02</b>									
July	14 737	27 393	19 654	7 571	28 988	99 212	74 725	89 592	378 430
August	19 403	139 722	19 498	10 687	29 850	139 726	98 097	111 202	584 391
September	17 922	172 850	19 594	7 687	25 943	104 533	68 422	92 551	523 420
October	23 648	63 528	19 978	9 154	33 610	159 511	82 343	91 382	496 998
November	25 109	13 766	21 446	10 959	25 354	130 063	66 386	95 258	406 947
December	17 232	78 949	18 247	6 218	23 108	99 669	52 322	70 152	379 968
January	16 611	1 347	26 023	9 135	33 252	136 134	63 910	94 197	406 187
February	16 447	127 019	19 898	8 556	24 823	109 118	73 577	91 103	490 816
March	12 504	39 514	35 457	8 338	26 536	94 835	72 474	79 012	389 943
April	11 993	78 266	24 836	9 947	27 980	113 247	81 305	79 415	450 747
May	14 585	62 102	27 331	9 842	27 092	117 219	80 639	86 692	445 885
June	15 103	64 704	14 566	8 448	26 002	96 307	73 499	77 657	393 051
<b>2002-03</b>									
July	17 666	66 712	18 971	7 211	33 106	111 832	88 041	91 501	454 751
August	20 355	63 951	19 172	11 171	35 439	121 992	83 002	97 867	476 144
September	19 907	79 309	20 444	8 905	32 537	123 899	77 183	92 533	474 644
October	27 427	75 644	20 844	11 574	36 982	138 671	102 870	111 149	549 843
November	25 409	99 478	17 968	8 485	32 307	130 169	86 248	99 157	525 746
December	23 239	138 539	19 488	7 312	29 503	161 868	58 838	92 042	552 087

(a) Restrictions are placed on the release of statistics for certain commodities for reasons of confidentiality. These restrictions do not affect total export and import figures, but they can affect some items within commodity, industry and country tables. See *International Trade* (cat. no. 5422.0), Explanatory Notes, paragraph 30, for more details.

(b) Includes other commodity groups not listed.

Source: ABS data available on request.

## 8

## TURNOVER OF RETAIL ESTABLISHMENTS, BY INDUSTRY—TREND

Period	Food retailing	Department stores	Clothing and soft good retailing	Household good retailing	Recreational good retailing	Other retailing	Hospitality and services	Total
	\$m	\$m	\$m	\$m	\$m	\$m	\$m	\$m
<b>2001-02</b>								
October	420.7	96.0	48.6	121.3	26.8	131.4	154.5	999.1
November	423.4	97.1	49.3	123.4	27.3	130.4	156.4	1007.2
December	425.9	98.3	50.3	126.2	28.1	129.6	159.5	1017.5
January	428.1	99.0	51.4	129.5	28.7	129.9	163.5	1030.1
February	430.4	99.3	52.4	133.2	28.9	131.3	167.6	1043.4
March	433.0	99.4	53.2	136.4	28.7	133.0	170.9	1055.3
April	436.2	99.3	53.6	138.5	28.3	134.3	173.6	1064.7
May	440.0	99.4	53.8	138.9	28.3	134.1	175.9	1071.0
June	443.8	99.5	53.9	137.9	28.7	132.3	178.3	1074.6
<b>2002-03</b>								
July	447.1	99.9	54.5	136.3	29.5	129.2	180.6	1076.8
August	449.6	100.6	55.4	135.1	30.6	125.6	182.1	1078.1
September	451.3	101.5	56.6	134.5	31.6	122.2	182.3	1079.1
October	452.6	102.6	57.9	134.8	32.3	119.0	181.6	1080.0
November	453.7	103.6	59.1	135.5	32.8	116.2	180.4	1080.9
December	454.6	104.7	60.2	136.5	33.2	113.8	178.8	1081.6

Source: Retail Trade, Australia (cat. no. 8501.0).

## 9

## NEW MOTOR VEHICLE SALES, BY TYPE OF VEHICLE

Period	Original			Seasonally adjusted			Trend estimate		
	Passenger vehicles	Other vehicles	Total	Passenger vehicles	Other vehicles	Total	Passenger vehicles	Other vehicles	Total
<b>2001-02</b>									
November	3176	1339	4515	2841	1282	4123	2880	1285	4165
December	2989	1390	4379	2852	1268	4120	2896	1310	4206
January	2681	1046	3727	3492	1391	4883	2912	1335	4247
February	2892	1276	4168	3057	1426	4483	2925	1360	4285
March	2889	1335	4224	2866	1252	4118	2932	1384	4316
April	2727	1258	3985	2954	1405	4359	2936	1406	4342
May	2945	1703	4648	2859	1511	4370	2947	1419	4366
June	3342	1801	5143	3028	1420	4448	2968	1433	4401
<b>2002-03</b>									
July	3049	1408	4457	2941	1419	4360	2982	1437	4419
August	3108	1429	4537	3010	1417	4427	2991	1435	4426
September	2936	1251	4187	3121	1460	4581	2998	1434	4432
October	3109	1390	4499	2989	1445	4434	3011	1445	4456
November	3134	1507	4641	2925	1501	4426	3039	1470	4509
December	3062	1469	4531	2862	1276	4138	3080	1504	4584
January	2653	1335	3988	3467	1769	5236	3134	1540	4674

Source: Sales of New Motor Vehicles, Australia (cat. no. 9314.0.55.001).

## 10

## ACTUAL PRIVATE NEW CAPITAL EXPENDITURE, BY SELECTED INDUSTRY AND TYPE OF ASSET

Period	Industry			Total	Type of asset	
	Mining	Manufacturing	Other selected industries		New buildings and structures	Equipment, plant and machinery
ANNUAL (\$m)						
<b>1999-00</b>	251	899	1 431	2 579	640	1 939
<b>2000-01</b>	434	891	1 537	2 862	692	2 170
<b>2001-02</b>	355	927	1 831	3 113	617	2 496
QUARTERLY, ORIGINAL (\$m)						
<b>2000-01</b>						
June	66	222	334	622	117	506
<b>2001-02</b>						
September	79	206	326	611	136	475
December	97	267	527	891	186	705
March	78	198	439	714	136	578
June	101	256	539	896	159	738
<b>2002-03</b>						
September	117	226	456	799	154	646
QUARTERLY, TREND (\$m)						
<b>2000-01</b>						
June	n.a.	n.a.	n.a.	660	131	529
<b>2001-02</b>						
September	n.a.	n.a.	n.a.	672	133	539
December	n.a.	n.a.	n.a.	736	152	584
March	n.a.	n.a.	n.a.	807	160	647
June	n.a.	n.a.	n.a.	859	161	698
<b>2002-03</b>						
September	n.a.	n.a.	n.a.	896	161	735

Source: Private New Capital Expenditure, Australia (cat. no. 5625.0) and ABS data available on request.

## 11

## TOURIST ACCOMMODATION

Period	Licensed hotels with facilities				Motels and guesthouses				Serviced apartments			
	Estab-lish-ments	Guest rooms	Room occu-pancy	Takings	Estab-lish-ments	Guest rooms	Room occu-pancy	Takings	Estab-lish-ments	Guest rooms	Room occu-pancy	Takings
	no.	no.	%	\$'000	no.	no.	%	\$'000	no.	no.	%	\$'000
<b>2000-01</b>												
September	60	4 070	56.3	23 960	147	5 218	50.6	19 898	26	1 211	56.9	6 252
December	62	4 128	58.2	26 070	146	5 204	54.4	21 557	26	1 220	62.4	7 232
March	62	3 905	59.9	25 686	146	5 217	55.2	21 889	27	1 280	67.1	7 955
June	61	4 066	55.9	23 849	146	5 230	50.5	20 289	27	1 300	63.2	7 959
<b>2001-02</b>												
September	61	4 078	56.3	23 498	146	5 231	49.7	19 926	27	1 293	60.1	7 019
December	61	4 083	61.0	26 556	144	5 170	51.9	21 044	27	1 283	67.0	—
March	62	4 091	61.6	27 321	145	5 196	55.6	22 468	27	1 293	70.5	8 454
June	62	4 364	55.4	24 362	145	5 234	50.4	20 482	29	1 357	65.6	8 078
<b>2002-03</b>												
September	63	4 381	57.9	26 109	144	5 220	49.4	20 150	30	1 430	65.8	8 595

Source: Tourist Accommodation, Australia (cat. no. 8635.0).

Period	Houses		Total dwelling units		New residential building \$m	Alterations and additions to residential building \$m	Total residential building \$m	Non-residential building \$m	Total building \$m
	Private sector	Total	Private sector	Total					
	no.	no.	no.	no.					
ANNUAL									
<b>1999-00</b>	8 290	8 392	9 915	10 024	1 022.9	188.9	1 211.8	585.7	1 797.5
<b>2000-01</b>	5 555	5 644	6 659	6 775	735.6	157.3	892.9	718.2	1 611.1
<b>2001-02</b>	8 863	9 177	10 527	10 881	1201.0	191.6	1392.6	795.6	2188.2
MONTHLY, ORIGINAL									
<b>2001-02</b>									
September	712	731	840	863	95.9	14.5	110.3	48.3	158.6
October	778	797	877	904	98.0	19.6	117.7	81.9	199.6
November	764	810	881	931	100.4	16.1	116.5	57.3	173.8
December	699	745	924	970	107.9	13.0	120.9	42.9	163.7
January	667	688	741	764	86.7	13.2	99.8	94.0	193.9
February	770	839	899	971	104.8	17.7	122.6	59.6	182.2
March	756	774	886	904	97.0	14.3	111.3	74.9	186.2
April	701	714	970	987	111.3	16.2	127.5	55.8	183.3
May	799	823	957	981	119.3	16.5	135.9	55.5	191.4
June	716	742	776	804	94.9	17.6	112.6	61.1	173.6
<b>2002-03</b>									
July	796	843	878	935	113.7	20.1	133.8	48.3	182.2
August	808	838	1 038	1 072	110.2	22.0	132.2	121.0	253.2
September	763	795	826	860	99.7	20.3	120.0	72.6	192.6
October	729	767	1 083	1 125	198.0	20.5	218.5	56.1	274.6
November	723	760	884	933	117.0	20.1	137.1	152.2	289.3
December	580	623	846	891	112.2	19.3	131.6	62.9	194.5
MONTHLY, TREND									
<b>2001-02</b>									
September	744	762	869	893	92.9	15.6	108.6	66.9	175.5
October	758	785	895	927	98.0	15.7	113.7	70.3	184.0
November	763	798	907	946	102.0	15.7	117.8	73.3	191.1
December	764	803	917	959	105.6	15.7	121.3	74.5	195.8
January	763	802	927	968	108.9	15.8	124.7	73.4	198.1
February	756	792	926	963	110.8	15.9	126.7	69.8	196.5
March	745	776	916	948	111.1	16.0	127.1	64.8	192.0
April	738	765	896	925	107.4	16.4	123.9	60.9	184.8
May	739	765	876	905	103.1	17.1	120.2	58.5	178.7
June	748	776	869	901	102.2	17.9	120.1	59.4	179.5
<b>2002-03</b>									
July	758	789	877	912	106.2	18.6	124.8	64.9	189.7
August	758	792	894	933	113.7	19.3	133.0	72.9	205.9
September	746	782	917	958	122.4	19.8	142.3	81.1	223.3
October	724	761	938	980	130.2	20.2	150.4	88.7	239.1
November	698	736	951	995	135.3	20.5	155.8	95.2	251.0
December	672	712	959	1005	138.9	20.6	159.5	99.4	258.9

Source: Building Approvals, Australia (cat. no. 8731.0) and ABS data available on request.

## 13

## BUILDING COMMENCEMENTS

Period	New houses		Total dwelling units(a)		New residential building \$m	Alterations and additions to residential building \$m	Non-residential building		
	Private sector	Total	Private sector	Total			Private sector	Total	Total building
	no.	no.	no.	no.			\$m	\$m	\$m
<b>1999-00</b>	7 729	7 856	9 266	9 410	1 044.8	198.8	351.2	576.8	1 820.5
<b>2000-01</b>	5 303	5 390	6 442	6 556	779.2	161.3	390.5	729.6	1 670.1
<b>2001-02</b>	8 030	8 281	9 702	9 991	1 236.2	197.4	575.0	761.9	2 195.5
<b>2000-01</b>									
September	1 380	1 419	1 777	1 819	228.9	25.6	104.8	166.3	420.8
December	1 345	1 350	1 498	1 512	167.8	44.3	122.8	151.4	363.5
March	1 157	1 179	1 562	1 597	186.5	43.6	70.9	111.2	341.2
June	1 422	1 443	1 605	1 628	196.0	47.9	91.9	300.7	544.6
<b>2001-02</b>									
September	1 835	1 857	2 365	2 400	324.0	45.1	145.3	188.7	557.9
December	2 217	2 273	2 543	2 613	307.8	52.7	167.2	199.4	559.9
March	1 853	1 949	2 232	2 335	280.0	50.5	122.6	173.7	504.1
June	2 125	2 202	2 563	2 644	324.4	49.0	139.9	200.1	573.6
<b>2002-03</b>									
September	2 309	2 401	2 645	2 749	354.7	57.6	171.0	236.8	649.1

(a) Includes conversions.

Source: Building Activity, Australia (cat. no. 8752.0).



## VALUE OF BUILDING WORK DONE AND COMPLETED DURING PERIOD

Period	New houses		New residential building			Non-residential building		Total building		
	Private sector	Total	Private sector	Total	Alterations and additions to residential building	Total residential building	Private sector	Total	Private sector	Total
	\$m	\$m	\$m	\$m	\$m	\$m	\$m	\$m	\$m	\$m
VALUE OF BUILDING WORK DONE										
<b>1999-00</b>	798.1	812.2	984.5	999.9	195.5	1 195.4	409.9	629.4	1 585.1	1 824.8
<b>2000-01</b>	679.7	686.9	835.5	845.0	161.9	1 006.8	395.0	624.0	1 385.4	1 630.9
<b>2001-02</b>	852.9	871.7	1 043.3	1 065.3	193.9	1 259.2	522.1	778.2	1 754.6	2 037.4
<b>2000-01</b>										
September	175.9	178.2	228.3	230.7	30.9	261.5	84.0	138.2	341.8	399.7
December	179.6	180.9	216.0	218.3	42.1	260.4	116.6	176.1	372.9	436.5
March	162.6	164.0	193.8	195.7	40.7	236.4	97.2	145.7	330.1	382.1
June	161.6	163.8	197.3	200.3	48.2	248.6	97.2	163.9	340.6	412.5
<b>2001-02</b>										
September	184.2	187.2	227.7	231.2	48.7	279.9	112.7	170.6	386.9	450.5
December	219.4	222.6	261.9	265.5	48.4	314.0	146.8	213.8	456.3	527.7
March	215.1	220.0	262.5	268.6	46.9	315.4	131.3	185.0	439.7	500.4
June	234.2	242.0	291.2	300.0	49.8	349.8	131.3	208.9	471.7	558.7
<b>2002-03</b>										
September	261.1	270.4	320.3	330.4	57.5	388.0	163.1	225.3	540.3	613.3
VALUE OF BUILDING WORK COMPLETED										
<b>1999-00</b>	713.5	730.1	867.6	886.2	191.9	1 078.1	362.9	538.4	1 419.4	1 616.4
<b>2000-01</b>	758.7	763.6	942.8	949.0	154.4	1 103.4	436.3	591.5	1 526.5	1 694.9
<b>2001-02</b>	750.8	766.9	884.9	904.3	180.5	1 084.8	430.7	718.7	1 489.7	1 803.6
<b>2000-01</b>										
September	175.5	176.2	199.0	199.9	31.4	231.4	133.2	180.5	362.5	411.9
December	222.2	224.8	313.7	317.3	35.8	353.1	82.8	107.7	430.7	460.8
March	173.0	174.3	216.4	217.9	34.9	252.8	82.4	138.5	330.9	391.2
June	188.0	188.3	213.7	213.9	52.2	266.1	137.9	164.9	402.4	431.0
<b>2001-02</b>										
September	149.9	153.2	173.1	177.6	55.0	232.6	75.5	121.0	300.5	353.7
December	194.3	197.6	220.5	224.4	38.1	262.5	129.3	259.9	386.3	522.4
March	174.8	177.2	231.9	234.8	39.4	274.2	83.8	127.4	353.7	401.6
June	231.7	238.9	259.4	267.4	48.1	315.6	142.0	210.3	449.2	525.9
<b>2002-03</b>										
September	209.1	219.3	240.1	252.2	45.5	297.7	111.7	164.9	396.6	462.6

Source: Building Activity, Australia (cat. no. 8752.0).

<i>Period</i>	<i>Pigmeat</i>	<i>Beef</i>	<i>Mutton</i>	<i>Lamb</i>	<i>Sawn timber(a)</i>
	<i>tonnes</i>	<i>tonnes</i>	<i>tonnes</i>	<i>tonnes</i>	<i>m<sup>3</sup></i>
<b>1999-00</b>	31 927	78 001	28 969	56 667	425 549
<b>2000-01</b>	36 679	82 533	36 103	61 893	389 417
<b>2001-02</b>	48 329	85 882	30 342	64 285	434 577
<b>2000-01</b>					
December	8 143	21 982	9 826	15 689	89 486
March	9 785	23 367	9 885	14 968	75 558
June	10 524	19 172	8 321	15 451	97 933
<b>2001-02</b>					
September	10 274	18 271	6 290	11 694	103 774
December	9 754	21 325	8 221	17 627	111 797
March	12 583	23 748	8 895	17 232	111 697
June	15 718	22 539	6 936	17 732	107 309
<b>2002-03</b>					
September	15 531	19 663	9 351	11 493	111 724
December	14 865	23 357	10 073	14 864	112 350

(a) From Australian softwood logs only.

Source: *Livestock Products, Australia (cat. no. 7215.0)* and ABS data available on request.

<i>Period</i>	<i>Food</i>	<i>Alcohol and tobacco</i>	<i>Clothing and footwear</i>	<i>Housing</i>	<i>House furnishings, supplies and services</i>	<i>Health</i>	<i>Transportation</i>	<i>Communication</i>	<i>Recreation</i>	<i>Education</i>	<i>Miscellaneous</i>	<i>All groups</i>
ANNUAL AVERAGE (1989-90 = 100.0)												
<b>1999-00</b>	130.8	179.1	103.3	97.0	112.9	165.7	129.4	97.7	119.1	215.8	148.8	126.3
<b>2000-01</b>	136.7	198.3	111.9	104.3	117.1	169.5	138.0	104.7	122.9	225.9	159.3	133.5
<b>2001-02</b>	143.1	207.3	111.1	108.2	120.6	173.0	135.8	105.8	126.9	235.8	165.1	137.2
QUARTERLY (1989-90 = 100.0)												
<b>2001-02</b>												
September	140.5	205.9	108.4	106.8	120.6	170.9	136.4	103.6	123.1	231.0	163.5	135.3
December	143.8	205.5	112.2	107.9	120.9	169.3	134.4	106.0	125.6	231.1	163.8	136.6
March	144.6	207.8	110.6	108.6	120.0	173.7	133.9	106.2	129.0	240.6	166.0	137.7
June	143.6	210.0	113.0	109.5	120.9	178.0	138.4	107.3	129.9	240.6	167.0	139.1
<b>2002-03</b>												
September	145.4	210.4	111.5	112.1	121.4	178.1	138.0	109.2	131.5	240.7	171.2	140.3
December	148.1	213.3	112.2	113.0	123.2	178.1	138.8	109.6	131.5	240.7	170.9	141.5
PERCENTAGE CHANGE FROM SAME QUARTER OF PREVIOUS YEAR												
<b>2001-02</b>												
September	5.0	6.5	-4.6	2.8	4.0	1.4	-0.3	-1.8	0.3	4.6	3.6	2.3
December	7.2	4.8	0.9	3.8	4.4	1.0	-2.3	1.0	1.8	4.6	3.5	3.1
March	3.7	3.6	0.1	4.0	2.2	1.8	-2.3	1.8	4.9	4.2	3.8	2.7
June	3.0	3.3	0.6	4.4	1.3	3.9	-1.4	3.3	6.0	4.2	3.6	3.0
<b>2002-03</b>												
September	3.5	2.2	2.9	5.0	0.7	4.2	1.2	5.4	6.8	4.2	4.7	3.7
December	3.0	3.8	0.0	4.7	1.9	5.2	3.3	3.4	4.7	4.2	4.3	3.6
PERCENTAGE CHANGE FROM PREVIOUS QUARTER												
<b>2001-02</b>												
September	0.8	1.3	-3.5	1.8	1.1	-0.2	-2.8	-0.3	0.5	0.0	1.4	0.1
December	2.3	-0.2	3.5	1.0	0.2	-0.9	-1.5	2.3	2.0	0.0	0.2	1.0
March	0.6	1.1	-1.4	0.6	-0.7	2.6	-0.4	0.2	2.7	4.1	1.3	0.8
June	-0.7	1.1	2.2	0.8	0.8	2.5	3.4	1.0	0.7	0.0	0.6	1.0
<b>2002-03</b>												
September	1.3	0.2	-1.3	2.4	0.4	0.1	-0.3	1.8	1.2	0.0	2.5	0.9
December	1.9	1.4	0.6	0.8	1.5	0.0	0.6	0.4	0.0	0.0	-0.2	0.9

Source: Consumer Price Index (cat. no. 6401.0).

# 17

## ESTIMATED RESIDENT POPULATION AND COMPONENTS OF POPULATION CHANGE(a)

Period	Net migration			Total increase	Population at end of period
	Natural increase	Interstate	Overseas(b)		
<b>1999-00</b>	6 306	-4 773	3 453	7 598	1 506 802
<b>2000-01</b>	5 635	-4 234	3 602	8 052	1 514 854
<b>2001-02</b>	5 887	-1 854	3 353	7 386	1 522 240
<b>1999-00</b>					
June	1 448	-1 147	156	1 110	1 506 802
<b>2000-01</b>					
September	1 121	-1 030	924	1 778	1 508 580
December	1 490	-1 308	1 660	2 603	1 511 183
March	1 740	-1 264	655	1 894	1 513 077
June	1 284	-632	363	1 777	1 514 854
<b>2001-02</b>					
September	1 244	-632	1 130	1 742	1 516 596
December	1 264	-171	1 185	2 278	1 518 874
March	1 737	-529	537	1 745	1 520 619
June	1 642	-522	501	1 621	1 522 240

(a) Includes category jumping.

Source: Australian Demographic Statistics (cat. no. 3101.0).

# 18

## BIRTHS, DEATHS, MARRIAGES AND DIVORCES

Period	Registrations			
	Births	Deaths	Marriages	Divorces
<b>1999-00</b>	17 896	11 590	8 428	4 197
<b>2000-01</b>	17 449	11 814	7 689	4 072
<b>2001-02</b>	17 481	11 594	7 474	n.y.a.
<b>1999-00</b>				
March	4 476	2 648	2 436	965
June	4 449	3 001	1 996	984
<b>2000-01</b>				
September	4 360	3 239	1 092	1 056
December	4 319	2 829	2 703	1 031
March	4 549	2 809	2 175	824
June	4 221	2 937	1 719	1 161
<b>2001-02</b>				
September	4 398	3 154	1 096	1 387
December	4 109	2 845	2 444	1 173
March	4 564	2 827	2 135	930
June	4 410	2 768	1 799	n.y.a.

Source: Australian Demographic Statistics (cat. no. 3101.0).

Period	Employed full-time		Employed part-time		Total employed		Unemployed		Labour force	
	Males	Females	Males	Females	Males	Females	Males	Females	Males	Females
ANNUAL AVERAGE ('000)										
<b>1999-00</b>	322.1	152.5	56.1	142.4	378.2	294.9	34.6	23.9	412.8	318.7
<b>2000-01</b>	322.6	156.7	54.8	143.5	377.4	300.2	32.6	20.2	410.0	320.4
<b>2001-02</b>	319.2	153.2	59.2	153.1	378.4	306.3	31.8	20.0	410.2	326.2
MONTHLY, ORIGINAL ('000)										
<b>2001-02</b>										
November	319.4	159.8	56.2	151.6	375.6	311.4	32.1	16.9	407.6	328.3
December	322.1	158.8	59.6	151.1	381.7	309.9	32.0	20.2	413.8	330.1
January	322.1	151.4	56.9	147.4	379.0	298.8	33.4	22.8	412.4	321.6
February	318.9	152.6	62.4	152.3	381.3	304.9	34.7	22.2	416.0	327.1
March	320.4	147.7	64.0	157.6	384.4	305.3	28.7	21.3	413.1	326.6
April	319.4	147.9	63.5	163.8	382.9	311.6	30.1	18.5	413.0	330.1
May	321.0	152.4	59.8	156.5	380.8	308.9	31.2	19.3	412.0	328.2
June	318.3	147.0	61.9	164.7	380.2	311.7	29.9	19.5	410.1	331.2
<b>2002-03</b>										
July	325.3	149.7	56.8	155.6	382.1	305.3	26.0	18.5	408.1	323.8
August	324.8	150.6	54.8	155.7	379.6	306.3	28.8	20.1	408.4	326.4
September	327.8	154.8	63.3	158.7	391.1	313.5	26.9	21.2	418.0	334.7
October	322.4	155.4	62.2	157.5	384.6	312.9	26.2	18.9	410.8	331.8
November	327.1	154.1	57.2	160.1	384.3	314.2	26.7	17.0	410.9	331.2
December	337.6	162.7	56.3	154.4	393.9	317.1	24.3	17.6	418.2	334.6
January	336.0	163.1	51.0	149.4	387.0	312.5	30.5	18.8	417.5	331.4
MONTHLY, TREND ('000)										
<b>2001-02</b>										
November	318.5	155.1	58.1	149.1	376.6	304.2	32.0	20.1	408.7	324.3
December	319.2	154.2	59.2	150.5	378.4	304.7	31.6	20.1	410.0	324.8
January	319.8	152.9	60.3	152.6	380.1	305.5	31.3	20.1	411.4	325.6
February	320.3	151.6	61.3	155.1	381.6	306.7	31.0	20.0	412.6	326.7
March	320.8	150.7	61.6	157.4	382.4	308.1	30.8	19.8	413.2	327.9
April	321.4	150.2	61.2	159.2	382.6	309.4	30.6	19.5	413.1	328.9
May	322.0	150.3	60.4	160.0	382.4	310.3	30.3	19.4	412.7	329.7
June	322.6	150.6	59.7	160.0	382.3	310.6	30.0	19.6	412.3	330.2
<b>2002-03</b>										
July	323.1	151.0	59.4	159.2	382.5	310.2	29.3	20.0	411.9	330.1
August	323.8	151.5	59.5	158.1	383.3	309.6	28.5	20.3	411.8	329.8
September	324.9	152.6	59.7	156.9	384.6	309.5	27.5	20.2	412.1	329.7
October	326.7	154.2	59.2	156.0	385.9	310.2	26.8	19.7	412.6	330.0
November	328.8	156.2	58.2	155.3	387.0	311.5	26.3	19.1	413.3	330.6
December	331.1	158.3	56.9	154.6	388.0	312.9	26.1	18.5	414.1	331.4
January	333.1	160.2	55.6	154.4	388.7	314.6	26.2	17.8	414.9	332.5

(a) Population aged 15 years and over.

Source: Labour Force, Australia, Preliminary (Cat. no. 6202.0).

Period	Civilian population			Unemployment rate			Participation rate		
	Males aged 15 and over	Females aged 15 and over	Persons aged 15-19	Males all ages	Females all ages	Persons all ages	Males	Females	Persons
	'000	'000	%	%	%	%	%	%	%
ANNUAL AVERAGE									
<b>1999-00</b>	587.6	613.8	20.0	8.4	7.5	8.0	70.3	51.9	60.9
<b>2000-01</b>	591.6	616.9	17.9	8.0	6.3	7.2	69.3	51.9	60.4
<b>2001-02</b>	595.4	620.5	18.5	7.8	6.1	7.1	68.9	52.6	60.6
MONTHLY, ORIGINAL									
<b>2001-02</b>									
November	594.8	619.9	16.5	7.9	5.2	6.7	68.5	53.0	60.6
December	595.1	620.1	20.9	7.7	6.1	7.0	69.5	53.2	61.2
January	595.5	620.5	24.4	8.1	7.1	7.7	69.3	51.8	60.4
February	595.9	620.9	19.1	8.3	6.8	7.7	69.8	52.7	61.1
March	596.2	621.3	18.3	6.9	6.5	6.8	69.3	52.6	60.8
April	596.6	621.7	16.3	7.3	5.6	6.5	69.2	53.1	61.0
May	597.0	622.1	17.9	7.6	5.9	6.8	69.0	52.8	60.7
June	597.4	622.5	17.5	7.3	5.9	6.7	68.6	53.2	60.8
<b>2002-03</b>									
July	597.9	623.0	13.0	6.4	5.7	6.1	68.3	52.0	59.9
August	598.4	623.5	16.3	7.0	6.2	6.7	68.2	52.4	60.1
September	598.9	624.0	16.6	6.4	6.3	6.4	69.8	53.6	61.5
October	599.3	624.4	16.3	6.4	5.7	6.1	68.5	53.1	60.7
November	599.8	624.8	14.9	6.5	5.1	5.9	68.5	53.0	60.6
December	600.2	625.2	15.5	5.8	5.3	5.6	69.7	53.5	61.4
January	600.9	625.8	19.7	7.3	5.7	6.6	69.5	53.0	61.0
MONTHLY, TREND									
<b>2001-02</b>									
November	n.a.	n.a.	n.a.	7.8	6.2	7.1	68.7	52.3	60.3
December	n.a.	n.a.	n.a.	7.7	6.2	7.0	68.9	52.4	60.5
January	n.a.	n.a.	n.a.	7.6	6.2	7.0	69.1	52.5	60.6
February	n.a.	n.a.	n.a.	7.5	6.1	6.9	69.3	52.6	60.8
March	n.a.	n.a.	n.a.	7.4	6.0	6.8	69.3	52.8	60.9
April	n.a.	n.a.	n.a.	7.4	5.9	6.7	69.2	52.9	60.9
May	n.a.	n.a.	n.a.	7.4	5.9	6.7	69.1	53.0	60.9
June	n.a.	n.a.	n.a.	7.3	5.9	6.7	69.0	53.0	60.9
<b>2002-03</b>									
July	n.a.	n.a.	n.a.	7.1	6.1	6.6	68.9	53.0	60.8
August	n.a.	n.a.	n.a.	6.9	6.1	6.6	68.8	52.9	60.7
September	n.a.	n.a.	n.a.	6.7	6.1	6.4	68.8	52.8	60.7
October	n.a.	n.a.	n.a.	6.5	6.0	6.3	68.8	52.8	60.7
November	n.a.	n.a.	n.a.	6.4	5.8	6.1	68.9	52.9	60.7
December	n.a.	n.a.	n.a.	6.3	5.6	6.0	69.0	53.0	60.8
January	n.a.	n.a.	n.a.	6.3	5.4	5.9	69.1	53.2	61.0

(a) Population aged 15 years and over.

Source: Labour Force, Australia, Preliminary (cat. no. 6202.0).

Period	Males			Females			Persons		
	Full-time adult ordinary time earnings	Full-time adult total earnings	All males total earnings	Full-time adult ordinary time earnings	Full-time adult total earnings	All females total earnings	Full-time adult ordinary time earnings	Full-time adult total earnings	All employees total earnings
ANNUAL AVERAGE (\$ per week)									
<b>1999-00</b>	756.80	812.50	695.00	641.70	663.30	457.20	714.40	757.50	575.90
<b>2000-01</b>	811.30	864.40	746.80	685.20	703.90	491.20	765.70	806.40	619.70
<b>2001-02</b>	830.20	890.18	775.00	731.10	744.33	505.18	797.18	841.68	643.75
QUARTERLY, ORIGINAL (\$ per week)									
<b>2001-02</b>									
August	832.60	875.90	771.20	714.50	727.10	513.00	791.70	824.30	644.50
November	827.80	884.90	772.10	733.00	745.80	506.00	796.10	838.40	641.40
February	831.00	900.50	773.20	741.80	754.60	497.90	801.50	852.20	639.20
May	829.40	899.40	783.50	735.10	749.80	503.80	799.40	851.80	649.90
<b>2002-03</b>									
August	829.90	877.40	765.50	757.20	770.30	543.20	805.50	841.40	661.80
September	851.10	902.10	781.00	755.80	769.30	527.20	818.90	857.20	662.40
QUARTERLY, TREND (\$ per week)									
<b>2001-02</b>									
August	828.70	879.10	768.40	716.90	730.30	505.50	790.10	827.80	639.50
November	830.30	887.10	772.30	728.00	740.90	502.60	796.10	838.30	640.50
February	828.90	894.00	774.80	737.50	751.00	503.80	799.10	847.30	643.10
May	830.80	895.20	776.30	745.00	758.70	513.40	802.70	850.40	650.30
<b>2002-03</b>									
August	835.90	892.50	776.50	751.60	764.90	526.50	807.80	850.10	659.00
September	842.80	889.10	775.30	757.20	770.00	537.80	813.90	848.60	665.90

Source: Average Weekly Earnings, States and Australia (cat. no. 6302.0).

## 22

## SECURED HOUSING FINANCE COMMITMENTS(a)

Period	Original		Seasonally adjusted		Trend	
	Dwelling units	Value	Dwelling units	Value	Dwelling units	Value
	no.	\$m	no.	\$m	no.	\$m
<b>2001-02</b>						
October	4334	473	4237	469	4323	476
November	4695	525	4331	480	4319	479
December	4423	508	4386	492	4297	480
January	3892	444	4346	487	4269	479
February	4008	455	4201	467	4264	477
March	4246	478	4226	477	4299	477
April	4112	458	4151	461	4368	480
May	4880	525	4508	486	4448	486
June	4681	498	4671	511	4504	494
<b>2002-03</b>						
July	4988	524	4711	502	4500	501
August	4166	476	4367	508	4430	504
September	3825	454	4171	493	4323	504
October	4329	517	4261	517	4215	503
November	4336	529	4038	494	4123	501
December	4312	537	4118	494	4049	498

(a) Excludes alterations and additions. Includes refinancing.

Source: Housing Finance for Owner Occupation, Australia (cat. no. 5609.0).

## 23

## FINANCE COMMITMENTS

Period	Commercial finance commitments			Personal finance commitments			
	Fixed loan facilities	Revolving credit facilities	Total commercial finance commitments	Fixed loan facilities	Revolving credit facilities	Total personal finance commitments	Total lease finance commitments
	\$m	\$m	\$m	\$m	\$m	\$m	\$m
<b>2001-02</b>							
October	412.6	295.7	708.3	162.4	145.4	307.8	14.9
November	551.8	295.1	846.9	180.6	178.5	359.1	25.6
December	611.8	290.5	902.3	165.9	147.2	313.0	16.2
January	338.8	228.3	567.1	164.2	119.9	284.1	10.9
February	422.8	288.2	711.0	176.3	134.7	310.9	13.9
March	545.5	235.5	781.0	176.3	145.9	322.3	14.6
April	476.6	226.0	702.6	169.8	151.7	321.5	13.3
May	457.3	220.1	677.4	193.8	158.7	352.5	16.3
June	595.1	370.9	966.0	188.7	187.9	376.6	17.3
<b>2002-03</b>							
July	593.0	413.3	1 006.3	198.3	180.2	378.5	15.2
August	524.6	484.1	1 008.7	195.7	180.2	375.9	12.3
September	524.0	433.9	957.9	180.2	150.1	330.4	13.4
October	545.4	372.3	917.7	190.4	182.3	372.8	14.2
November	519.2	341.6	860.8	199.1	190.1	389.2	12.8
December	706.9	373.0	1 079.9	210.0	204.9	414.9	14.2

Source: ABS data available on request.



## PUBLICATIONS SOURCE INDEX

- (1) *Australian National Accounts: National Income, Expenditure and Product*, cat. no. 5206.0—and ABS data available on request
- (2) International Merchandise Trade, ABS data available on request
- (3) *Retail Trade, Australia*, cat. no. 8501.0, Monthly
- (4) *Sales of New Motor Vehicles, Australia*, cat. no. 9314.0.55.001 Monthly
- (5) *Private New Capital Expenditure, Australia*, cat. no. 5625.0, Quarterly—and Ausstats data
- (6) *Tourist Accommodation, Australia*, cat. no. 8635.0, Quarterly
- (7) *Building Approvals, Australia*, cat. no. 8731.0, Monthly
- (8) *Building Activity, Australia*, cat. no. 8752.0, Quarterly
- (9) *Engineering Construction Activity, Australia*, cat. no. 8762.0, Quarterly
- (10) *Manufacturing Production, Australia, Preliminary*, cat. no. 8301.0, Quarterly
- (11) *Livestock Products, Australia*, cat. no. 7215.0, Quarterly—and ABS data available on request
- (12) *Actual and Expected Private Mineral Exploration, Australia*, cat. no. 8412.0, Quarterly
- (13) *Consumer Price Index*, cat. no. 6401.0, Quarterly
- (14) *Producer Price Indexes, Australia*, cat. no. 6427.0, Quarterly
- (15) *House Price Indexes: Eight Capital Cities*, cat. no. 6416.0, Quarterly
- (16) *Australian Demographic Statistics*, cat. no. 3101.0, Quarterly
- (17) *Labour Force, Australia, Preliminary*, cat. no. 6202.0, Monthly
- (18) *Job Vacancies, Australia*, cat. no. 6354.0, Quarterly
- (19) *Industrial Disputes, Australia*, cat. no. 6321.0, Monthly
- (20) *Average Weekly Earnings, States and Australia*, cat. no. 6302.0, Quarterly
- (21) *Wage Cost Index, Australia*, cat. no. 6345.0, Quarterly
- (22) *Housing Finance for Owner Occupation, Australia*, cat. no. 5609.0, Monthly
- (23) *Lending Finance, Australia*, cat. no. 5671.0, Monthly—and ABS data available on request
- (24) *Reserve Bank of Australia Bulletin*

## FOR MORE INFORMATION...

- INTERNET* **www.abs.gov.au** the ABS web site is the best place to start for access to summary data from our latest publications, information about the ABS, advice about upcoming releases, our catalogue, and Australia Now—a statistical profile.
- LIBRARY* A range of ABS publications is available from public and tertiary libraries Australia-wide. Contact your nearest library to determine whether it has the ABS statistics you require, or visit our web site for a list of libraries.
- CPI INFOLINE* For current and historical Consumer Price Index data, call 1902 981 074 (call cost 77c per minute).
- DIAL-A-STATISTIC* For the latest figures for National Accounts, Balance of Payments, Labour Force, Average Weekly Earnings, Estimated Resident Population and the Consumer Price Index call 1900 986 400 (call cost 77c per minute).

**INFORMATION SERVICE**

Data which have been published and can be provided within five minutes are free of charge. Our information consultants can also help you to access the full range of ABS information—ABS user-pays services can be tailored to your needs, time frame and budget. Publications may be purchased. Specialists are on hand to help you with analytical or methodological advice.

- PHONE* **1300 135 070**
- EMAIL* **client.services@abs.gov.au**
- FAX* 1300 135 211
- POST* Client Services, ABS, GPO Box 796, Sydney 2001

## WHY NOT SUBSCRIBE?

ABS subscription services provide regular, convenient and prompt deliveries of ABS publications and products as they are released. Email delivery of monthly and quarterly publications is available.

- PHONE* 1300 366 323
- EMAIL* subscriptions@abs.gov.au
- FAX* 03 9615 7848
- POST* Subscription Services, ABS, GPO Box 2796Y, Melbourne 3001



2130740003035  
ISSN 1039-8880

RRP \$21.00